

A collection of seven small, round, clear plastic jars containing various colored cosmetic pigments. The colors include a dark blue, a bright yellow, a shimmering bronze, a light grey, and a white. The jars are arranged in two rows: three in the top row and four in the bottom row. The background is black, making the colors stand out.

COSMETIC HIGHLIGHTS 2023

Color Comes into Play – Something for Everyone

01 COSMETIC HIGHLIGHTS 2023

2023 Color Comes into Play – Something for Everyone

A newfound freedom and the joyful excitement of trying something new is our key messages for 2023



02 COSMETIC HIGHLIGHTS 2023

2023 – Color Comes into Play – Something for Everyone

Be inspired by our Cosmetic Pigment Highlights 2023 with a color palette that will intrigue you

- Discover the multifaceted contrast between the pigment strength of dark colors, the brilliant shine of light colors and the sophisticated intensity of our new color travel pigments with the unique, charismatic wind of change they introduce
- Warm brown, gold and bronze shades captivate with their gorgeous summer twist
- Blue comes in a smoky silver and creates the desire to leave the familiar
- Translucent interference red expresses exuberance and joie de vivre
- The color travel pigments offer a thrilling multidimensional color experience with two to three color shifts that become visible when light is reflected from different angles



03 COSMI 11410 TEA BROWN

A Rich Gleaming Golden Brown



COSMI 11410



AURORA
Synthetic Mica +
Natural Mica

04 COSMI 11410 TEA BROWN

A Rich Gleaming Golden Brown



Warmth and Reassurance

- Experience this vibrant warm tea brown that is both velvety and flattering
- Conjure a natural looking tan with a sun-kissed glow
- Play with the enormous versatility of brown
- PSD: 10-60 μm



Image: douglas.de

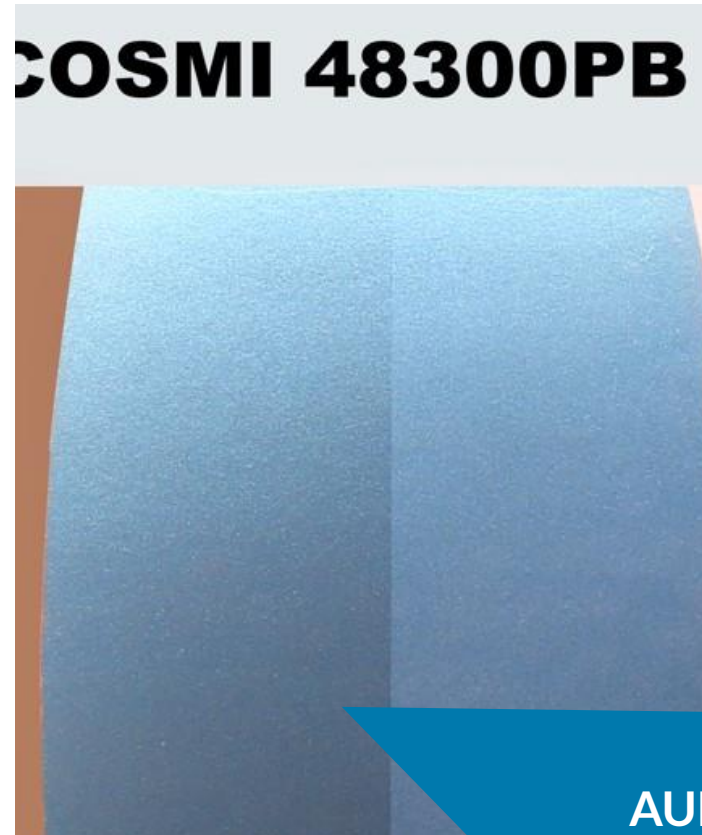


Image: douglas.de



05 COSMI 48300PB CERULEAN

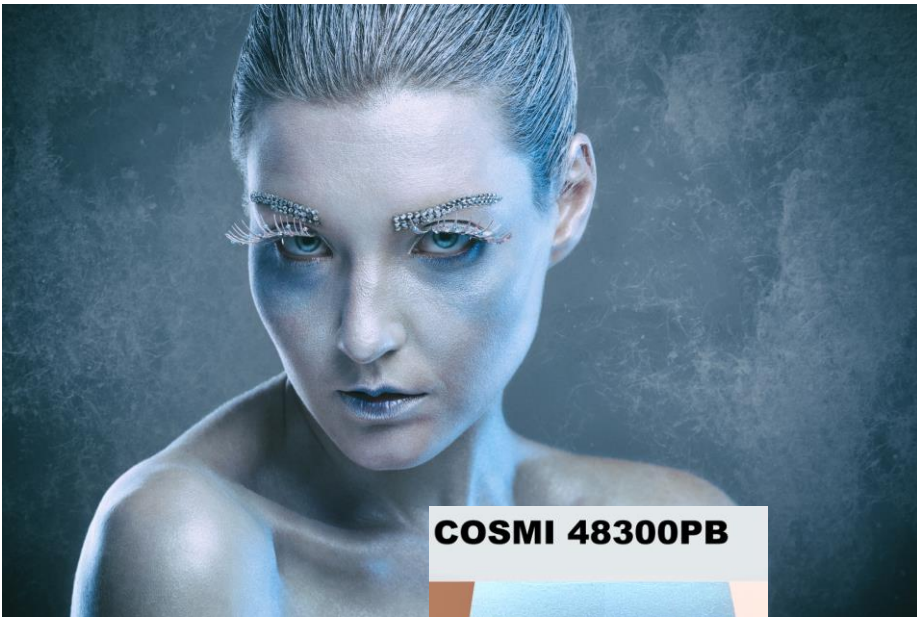
A Hazy-Sky Blue



AURORA
Synthetic Mica

06 COSMI 48300PB CERULEAN

A Hazy-Sky Blue



COSMI 48300PB



Mysticism and Tranquility

- Not gray, not blue but the best of both worlds
- Enjoy this **silver smoky blue** with a shimmering texture
- An expressive pearlescent pigment combined with **inorganic blue**
- PSD: 10-60 μm



Image: zalando.de



Image: pixabay.de



Image: beauteena.com



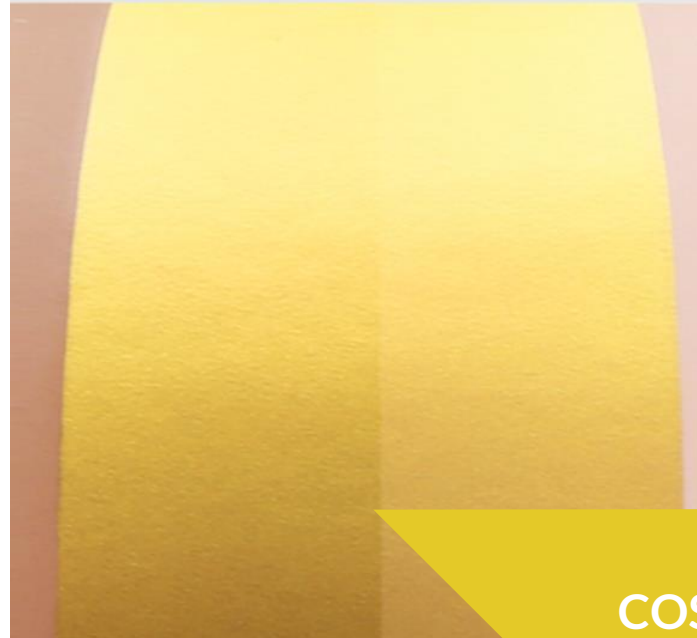
Image: pinterest.de

07 COSMI 9305 ATHENIAN GOLD

Golden Rituals



COSMI 9305



COSPEARL
Natural Mica

08 COSMI 9305 ATHENIAN GOLD



Golden Rituals



Passionate and Alluring

- Experience the interplay of **energy** and the **power of the sun**
- This **brilliantly warm shimmering royal gold** pigment combines pure elegance with modern diversity
- Use it to emphasize the USP of **golden rituals** that luxurious body care products offer and give skin a radiant appeal



COSMI 9305

PSD: 10-60 μ m

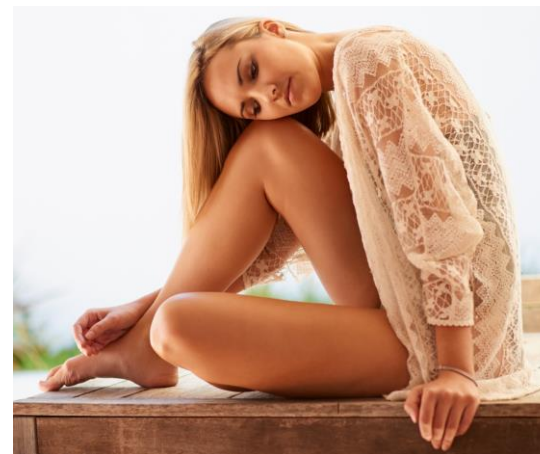


Image: rituals.com

09 COSMI 5301 SUPER FLASH BRONZE

Dazzling Shade of Spicy Cinnamon



COSPEARL
Natural Mica

10 COSMI 5301 SUPER FLASH BRONZE

Dazzling Shades of Spicy Cinnamon



Subtle or Eye-Catching

- Brown and orange in perfect harmony with a brilliant shimmer
- This spicy bronze glow matches a multitude of skin complexions
- A classic pearlescent pigment, based on natural mica and iron oxide
- PSD: 20-150 μm



Image: chanel.com



Image: zalando.de



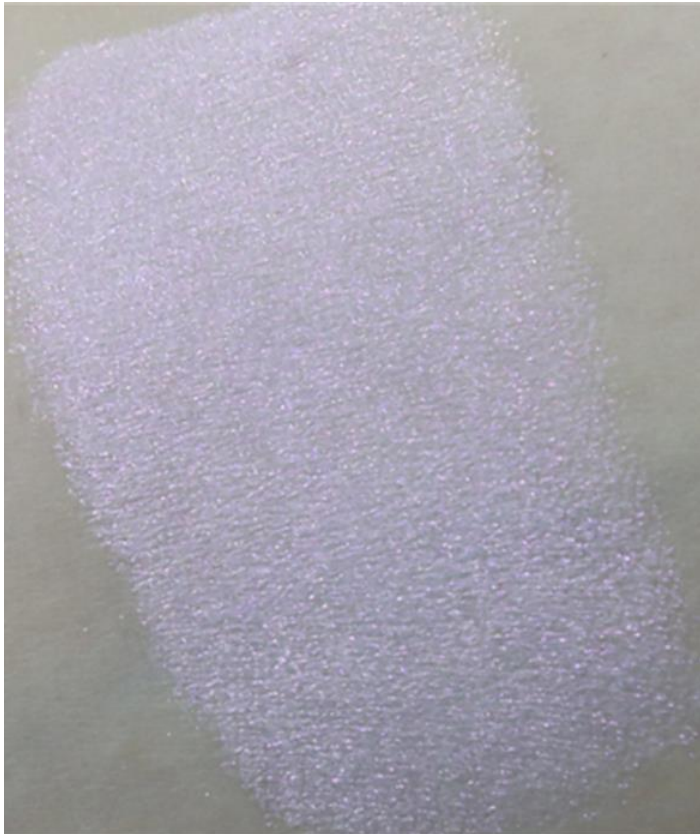
Image: charlottetilbury.com



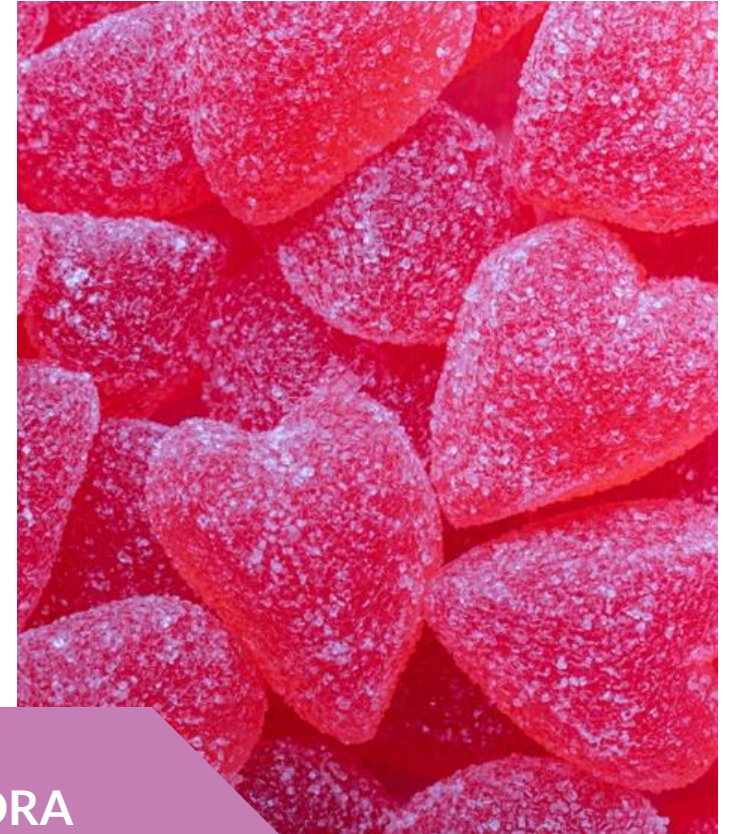
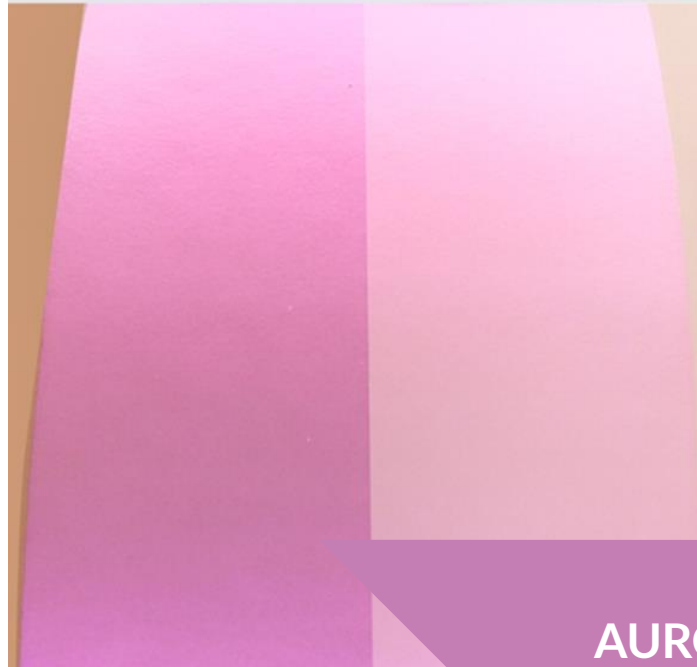
Image: douglas.de

11 COSMI 815-R2 SUPER BRIGHT RED

A Cheerful Translucent Candy Red



COSMI 815-R2



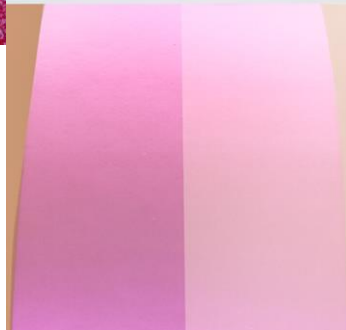
AURORA
Synthetic Mica

12 COSMI 815-R2 SUPER BRIGHT RED

A Cheerful Translucent Candy Red



COSMI 815-R2



Romantic Charm and Joie de Vivre

- This bright **sunny pink tone** with its brilliant gleam just radiates high spirits
- Discover this **youthful candy color** with a light shimmering raspberry flavor
- Convey **softness and femininity** in a huge variety of cosmetic products
- PSD: 8-35 μm



Image: chanel.com



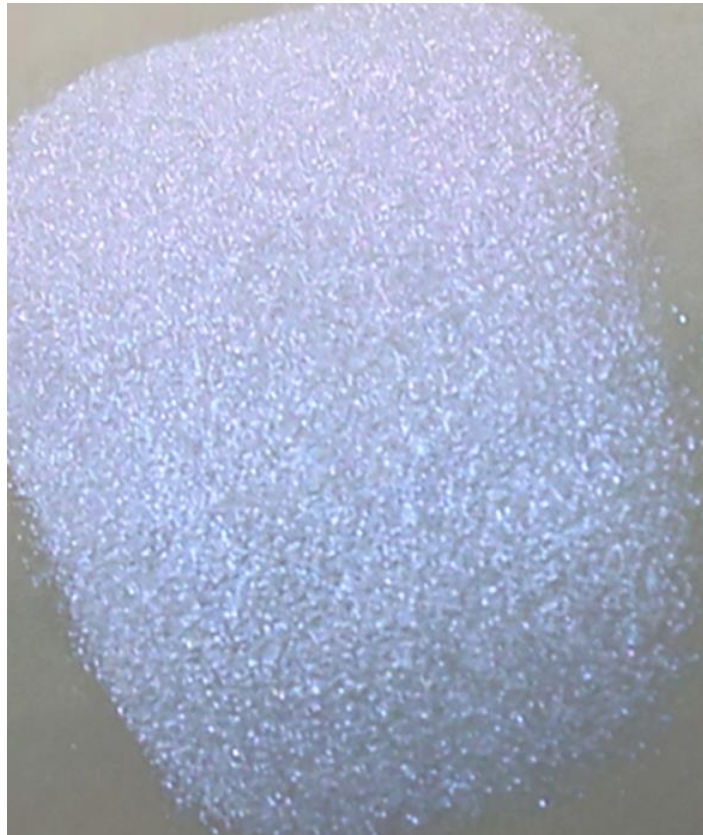
Image: de.shein.com



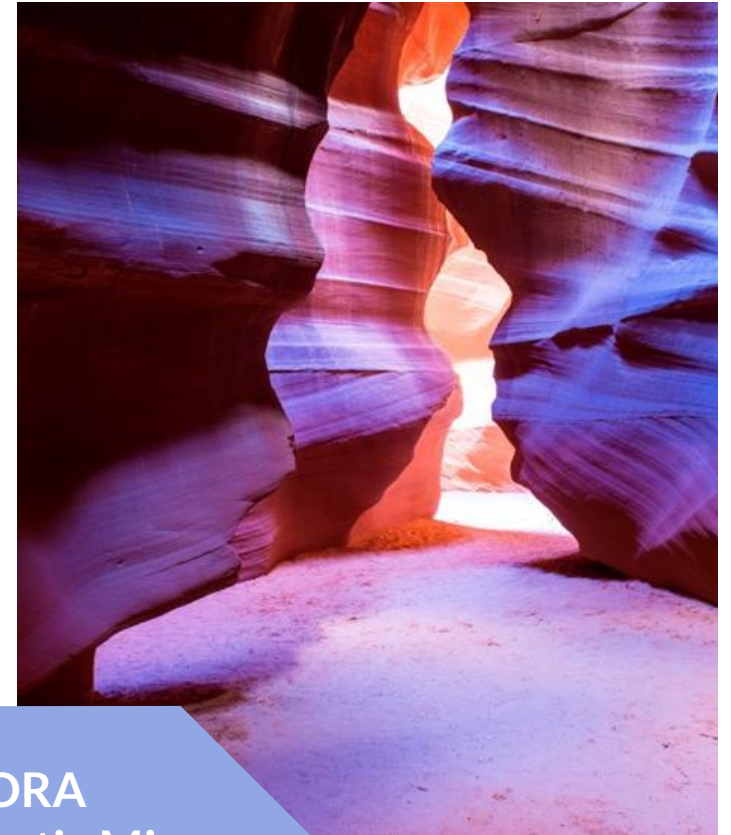
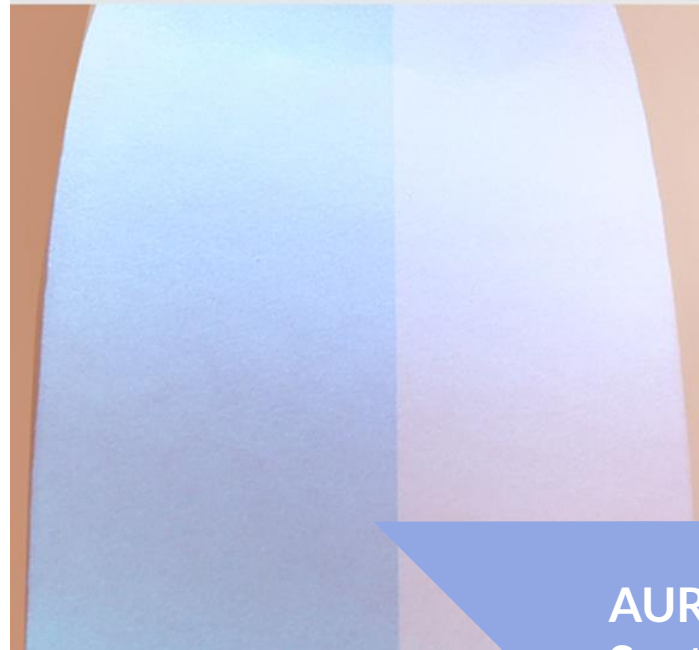
13 COSMI 19207H CREAM PURPLE/RED/BLUE



Fantastic Color Travel Inspired by the Antelope Canyon



COSMI 19207H



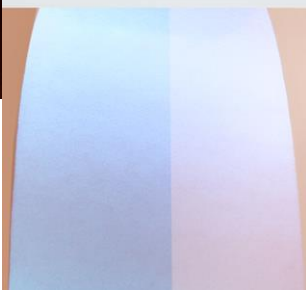
AURORA
Synthetic Mica

14 COSMI 19207H CREAM PURPLE/RED/BLUE

Fantastic Color Travel Inspired by the Antelope Canyon



COSMI 19207H



Colorful Rock Formations

- This iridescent shade is characterized by a **pale lilac-red** base color with a **shimmering blue hue**
- The burst of shapes and colors is typical for this **purple/red/blue color travel**
- Benefit from a high degree of **brightness** and **reflective power**
- PSD: 10-45 μm



Image: pinterest.de



Image: focallure.com



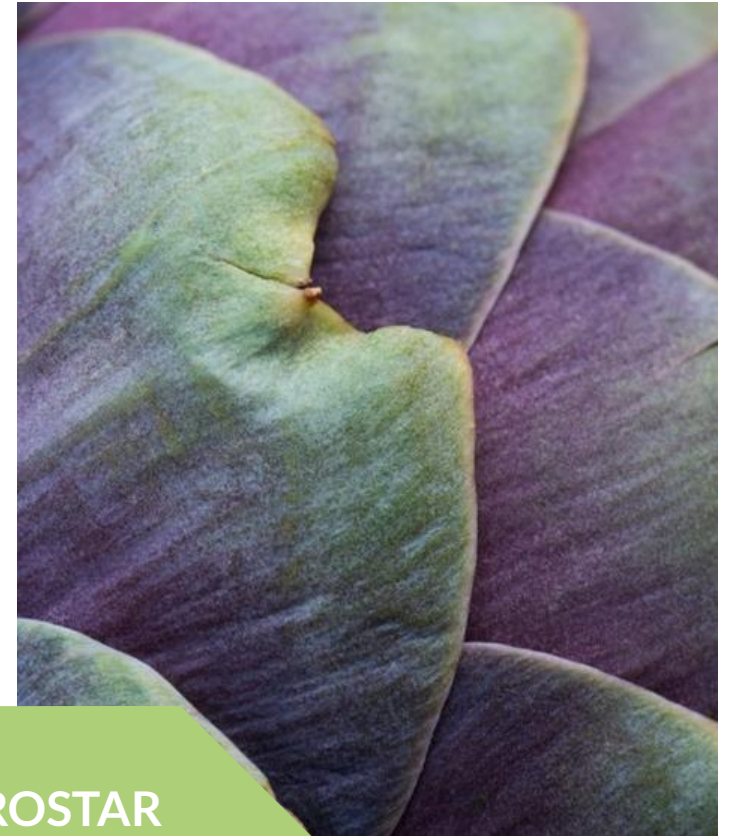
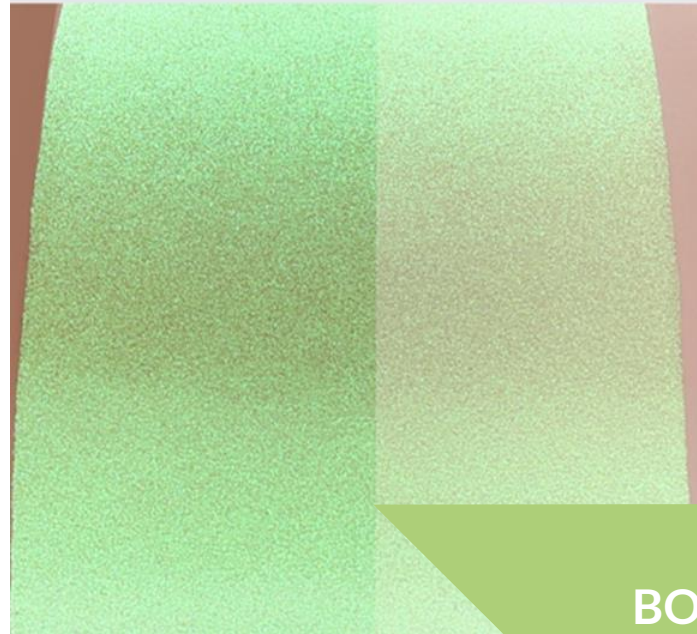
Image: manor.ch

15 COSMI 19821C VIOLET/GREEN VERY FLASH

The Beauty of a Striking Artichoke Flower



COSMI 19821C



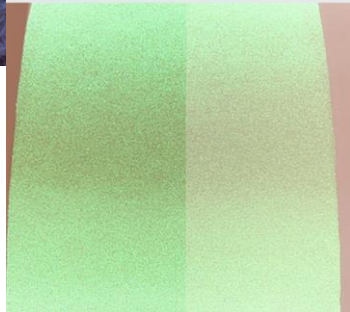
BOROSTAR
Borosilicate

16 COSMI 19821C VIOLET/GREEN VERY FLASH

The Beauty of a Striking Artichoke Flower



COSMI 19821C



Modern and Exotic

- This shifting iridescence creates a **symphony of green and violet**
- It allows for new **multichromatic effects** with scintillating sparkle and high reflectivity
- Stunning results **at a very low dosage**
- PSD: 30-100 μm



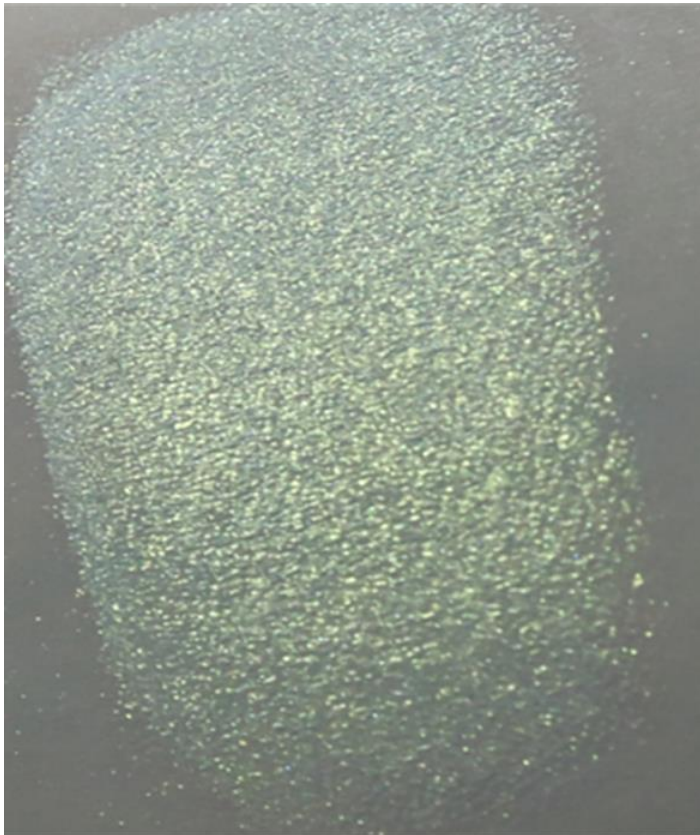
Image: annabelle.ch



Image: starrily.com

17 COSMI 19202H CREAM GREEN/YELLOW

A Glistering Bright Golden Green



AURORA
Synthetic Mica

18 COSMI 19202H CREAM GREEN/YELLOW

A Glistering Bright Golden Green



The Future is Multichromatic

- Set accents with an unparalleled **multichromatic finish**
- **Change colors** with the help of light reflections from different angles
- **Two-tone color shifts** that seamlessly meld into one another
- PSD: 10-45 μm



Image: zalando.de



Image: pinterest.de



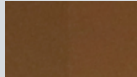




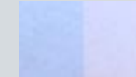


Image: dior.com



Image: sheglam.com

19 COSMETIC HIGHLIGHTS 2023

Product Information

Composition	COSMI 11410	COSMI 48300PB	COSMI 9305	COSMI 5301	COSMI 815-R2	COSMI 19207H	COSMI 19821C	COSMI 19202H
								
Synthetic Fluorophlogopite	X	X			X	X		X
Mica	X		X	X				
Calcium Aluminum Borosilicate							X	
Titanium Dioxide		X	X		X	X	X	X
Iron Oxide	X		X	X				
Tin Oxide			X		X	X	X	X
Iron Oxide Black	X							
Silicon Dioxide						X	X	X
Ferric Ferrocyanide		X						
Particle Size Distribution	10-60 µm	10-60 µm	10-60 µm	20-150 µm	8-35 µm	10-45 µm	30-100 µm	10-45 µm

20 COSMETIC HIGHLIGHTS 2023



Ordering Information

Product	Color	Package size
COSMI 11410 TEA BROWN	Dark Brown Pearlescent	sample, 5 kg, 25 kg
COSMI 48300PB CERULEAN	Dark Blue Pearlescent	sample, 5 kg, 25 kg
COSMI 9305 ATHENIAN GOLD	Gold Pearlescent	sample, 5 kg, 25 kg
COSMI 5301 SUPER FLASH BRONZE	Bronze Pearlescent	sample, 5 kg, 25 kg
COSMI 815-R2 SUPER BRIGHT RED	Red Pearlescent	sample, 5 kg, 25 kg
COSMI 19207H CREAM PURPLE/RED/BLUE	Purple/Red/Blue	sample, 5 kg, 25 kg
COSMI 19821C VIOLET/GREEN VERY FLASH	Violet/Green	sample, 5 kg, 25 kg
COSMI 19202H CREAM GREEN/YELLOW	Green/Yellow	sample, 5 kg, 25 kg



The background features a complex, abstract pattern of overlapping, semi-transparent geometric shapes in various colors including purple, blue, green, and yellow. These shapes are set against a dark, deep blue background. Interspersed among the polygons are soft, out-of-focus circular bokeh lights in similar colors, creating a vibrant and dynamic visual effect.

WE BRING COLOR TO THE WORLD

16.02.2023

Cosmetic Pigment Highlights 2023

THANK YOU!

Kunca Europe B.V.
Linie 506, 7325 DZ Apeldoorn
The Netherlands

customerservice@kuncaeurope.com
www.kunca-pigments.com